



# ELEMENTE

A VIBRANT RESTAURANT, BAR  
AND EVENT SPACE IN THE  
HEART OF HAMBURG

WHERE THE BOLD FLAVOURS OF LATIN  
AMERICA MEET MODERN CUISINE AND THE  
UNIQUE ATMOSPHERE OF HAFENCITY.

FROM INTIMATE GATHERINGS TO LIVELY  
CELEBRATIONS, ELEMENTE IS MADE FOR  
MOMENTS THAT DESERVE SOMETHING  
SPECIAL.



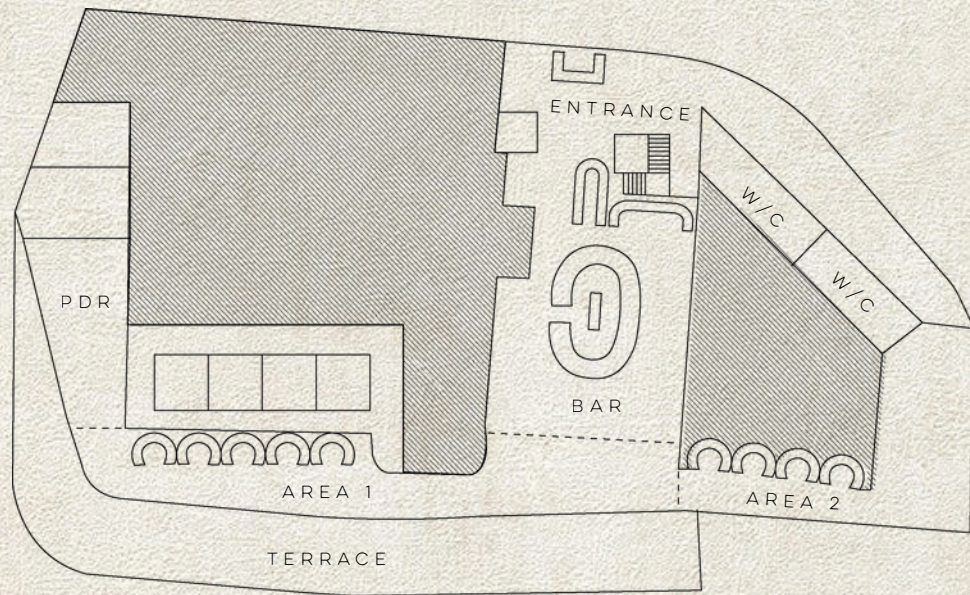


SINCE OUR SPACE IS STILL UNDER CONSTRUCTION, WE HAVE NO PHOTOS YET. WE'D LOVE TO INVITE YOU FOR A SITE VISIT TO SEE THE SPACE AND UNDERSTAND IT FOR YOURSELF.



# LEVEL 01

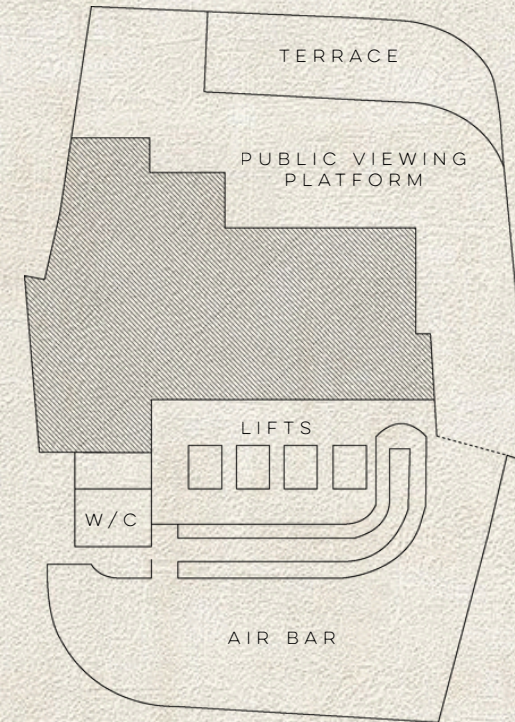
↑ WESTFIELD ↑



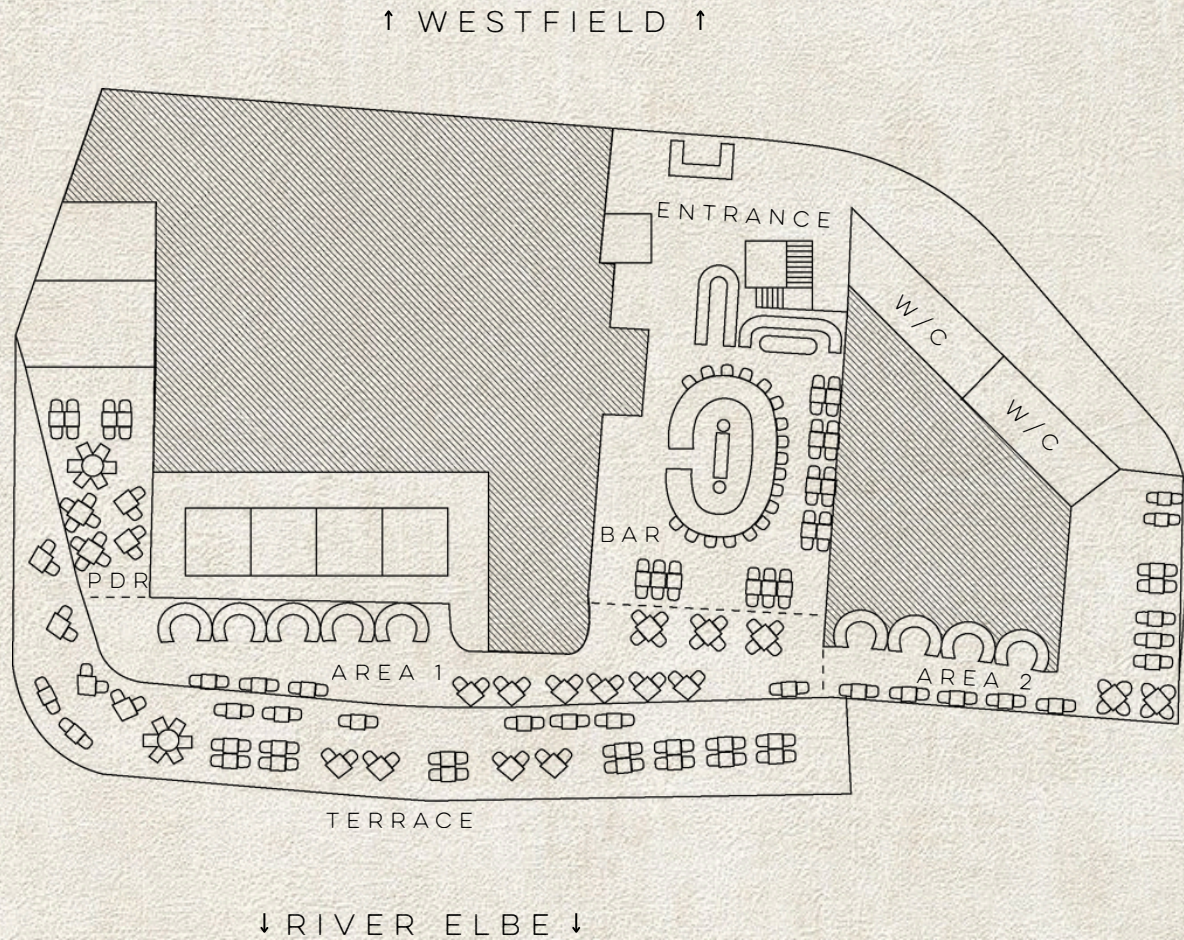
↓ RIVER ELBE ↓

# LEVEL 13

↑ HAMBURG CITY ↑



↓ RIVER ELBE ↓



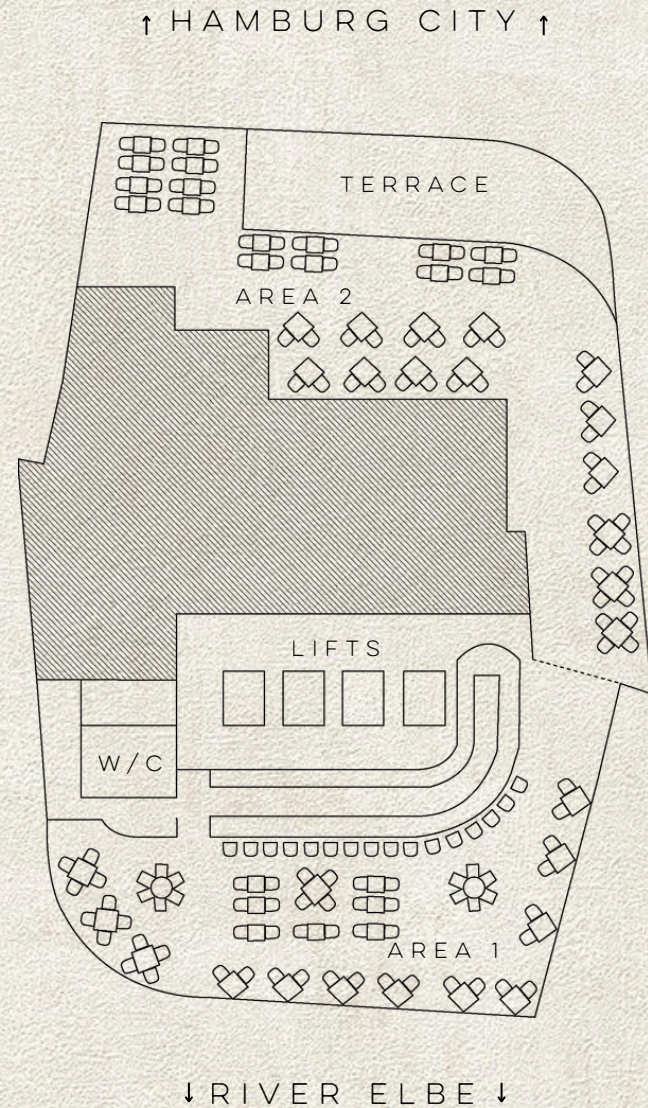
OVERLOOKING THE ELBE, THIS VIBRANT, DESIGN-LED SPACE COMBINES WARM INTERIORS, TROPICAL ACCENTS AND A STRIKING CENTRAL BAR.

With an outdoor terrace and flexible layout, it's perfectly suited to both intimate dinners and lively celebrations.

ENTIRE SPACE	300	180
BAR		65
AREA 1		60
AREA 2		55
TERRACE		70
PDR	20	26

# LEVEL 01 - ELEMENTE





PERCHED ON THE 13TH FLOOR, AIR BAR OFFERS SWEEPING PANORAMIC VIEWS OF THE ELBE AND HAMBURG'S SKYLINE.

With sleek, contemporary interiors and an exclusive rooftop terrace, it provides a striking setting for celebrations, private dinners and special events. Bespoke cocktails and curated menus can be arranged to create a truly memorable experience.

ENTIRE SPACE	180	150
AREA 1	90	75
AREA 2	90	75
TERRACE	50	

# LEVEL 13 - AIR BAR



# MENU HIGHLIGHTS

At Elemente we celebrate the culinary diversity of Latin America. Our chefs are finalising the menu ready for our opening, but here's a taste of what you can expect:

## CANAPÉS

### CRISPY TOSTADA

fried Quail egg, crispy bacon, smashed avocado, alepo chilli

### CARROT TUILE

salt baked carrot, smoked oat crème fraiche, tomato chutney & crispy leek (VG)

### TRUFFLE ARANCINI (V)

## BOWLS

### TUNA CEVICHE

red onion, coriander & leche de tigre

### SEA BASS TIRADITO

Saji amarillo, ginger & lime

### ROASTED PUMPKIN

quinotto & purple potato crisps (V)

## STALLS

### TACO STATION

### SUSHI & SASHIMI

### ASIAN STREET FOOD

### TARTARE STATION



## FINGER FOOD

- |   |                |
|---|----------------|
| <b>4 CANAPES, 2 BOWLS</b><br>ideal for a welcome appetiser                                  | 39 per person  |
| <b>6 CANAPES, 3 BOWLS</b><br>ideal for product launches                                     | 59 per person  |
| <b>4 CANAPES, 2 BOWLS &amp;<br/>2 LIVE COOKING STATIONS</b><br>ideal for a networking event | 129 per person |

## SEATED DINNER

- |   |                    |
|---|--------------------|
| <b>2, 3 OR 4 COURSE MENU</b><br>Set or sharing (family style) | from 69 per person |
| <b>BUSINESS LUNCH/GROUPS</b><br>8-15 guests                   | from 69 per person |

## BEVERAGES

- |   |                    |
|---|--------------------|
| <b>EARTH PACKAGE</b><br>Still & sparkling water<br>Soft drinks & juice spritzers<br>Beer (pilsner, wheat beer) & non-alcoholic beer<br>Red and white house wine<br>Tea & coffee specialities from Latin America | from 69 per person |
|---|--------------------|

*Once the package time has expired, we will charge for drinks according to consumption or extend the drinks package. Alternatively, you can switch to paying for drinks yourself after the package has expired.*

- |  |               |
|--|---------------|
| <b>WIND PACKAGE</b><br>Everything included in the earth package, plus:<br>Beer (1664 Blanc & Puerto 53)<br>Upgrade in welcome drink (e.g. from Crémant to signature aperitif)<br>Two predefined aperitifs<br>One predefined non-alcoholic aperitif | 75 per person |
|--|---------------|

- |   |                |
|---|----------------|
| <b>FIRE PACKAGE</b><br>Everything included in the earth package, plus:<br>Upgrade in welcome drink (e.g. from signature aperitif to champagne)<br>4 predefined long drinks<br>Two cocktails<br>One predefined Cardriver | 110 per person |
|---|----------------|

PACKAGES



# GETTING HERE

## TRAIN

- Überseequartier stop (U4)
- 2 stops from Hamburg Central Station
- 1 stop from Jungfernstieg

## BUS

- Am Sandtorpark (Überseequartier): 1 minute's walk from the neighbourhood; lines 602, 111
- Osakaallee (Überseequartier): 4 minutes' walk from the neighbourhood, line 4 (alight only), bus line 111
- Singapurstraße: 6 minutes' walk from the neighbourhood; lines 2, 4 (towards Alster palx), 6, 111, 602

## CAR

- Entrances on San Francisco Straße and Osakaallee
- The taxi rank is located next to Breuninger
- The MOIA pick-up and drop-off point is located on level 1, near the cruise terminal and the Ibis Styles Hotel



CHRISTIAN ZIELINSKI  
EVENT MANAGER

+49 1575733195

[Christian.Zielinski@rhchospitality.com](mailto:Christian.Zielinski@rhchospitality.com)

Elemente Restaurant & Air Bar 13  
Überseeboulevard 7  
20457  
Hamburg

[www.elementerestaurant.com](http://www.elementerestaurant.com)

GET IN TOUCH

